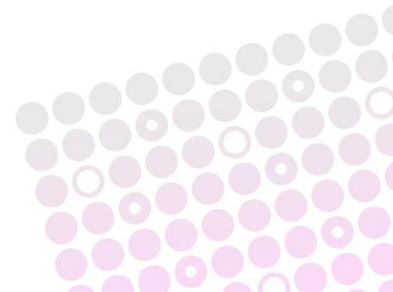


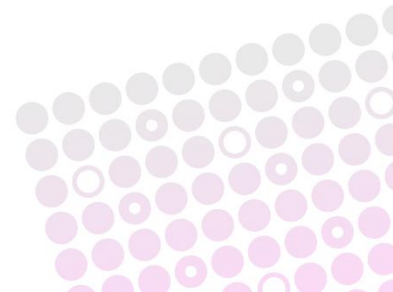
Insights in the 2010 wave of products

Ben Robb
MVP, SharePoint Server
CTO, cScape Ltd



What to expect in this session

- A short background explaining why BI is important
- An overview of BI investments in SharePoint 2010 and related technologies
 - This is a level 200 session
- Functional demos
 - I won't be doing deep dive “how to” technical demos



Use Business Intelligence to...

Get Real-Time Information

See what's happening right now

Find Inefficiencies

Understand variances and drill to detail to find trends

Save Money

Know your cost structure and take action to ensure you hit the bottom line

Find Profitable Customers

Focus resources where it really matters



Relevant Information is everywhere

Scorecards
IM/chat
Spreadsheets
Newspapers
Financial reports
Documents
Meetings
Email
Portals
Business books
Slide decks
Webcasts
Presentations
RSS feeds
Project plans
Intranet
Dashboards
Blogs
Magazines
Analytic applications
Television reports
Internet
Charts and graphs

BI Market Trends

- Collaborative Decision Making / Social BI
- Movement of budgets into Business Units
- BI for the masses
 - Democratising the tools



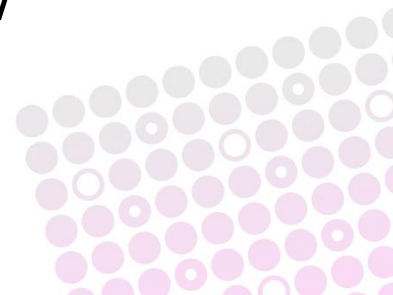
Source: Gartner (January 2010)

As of January 2010

2007 wave of products

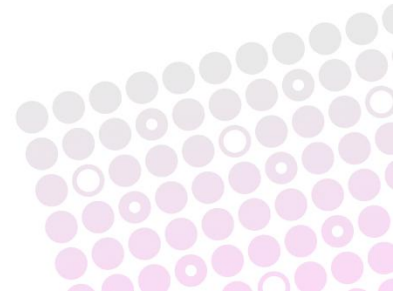
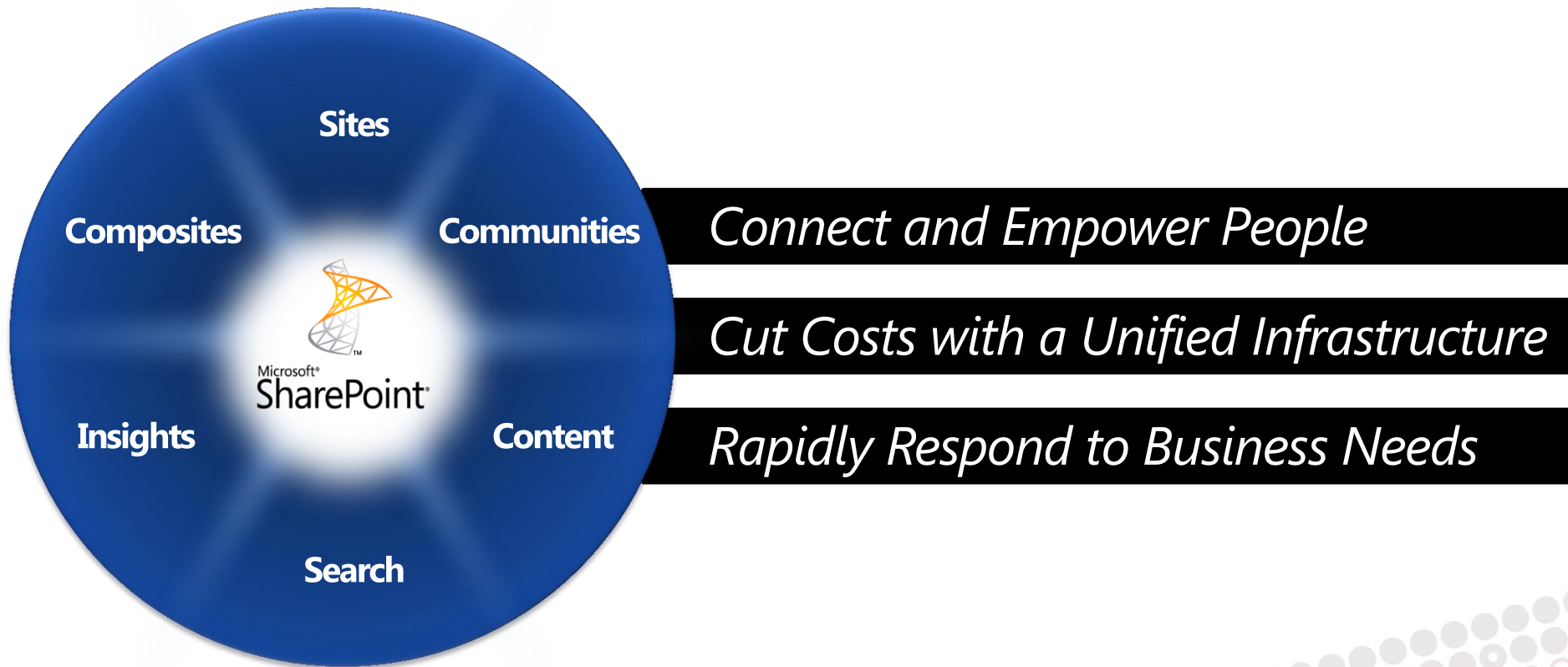
- Report Center
- Excel Services
- Connections to External Data Sources (BDC)
- KPI lists
- Filter web parts
- Dashboards

- PerformancePoint Server 2007
- SQL Server Reporting Services (SSRS) /
Analysis Services (SSAS)



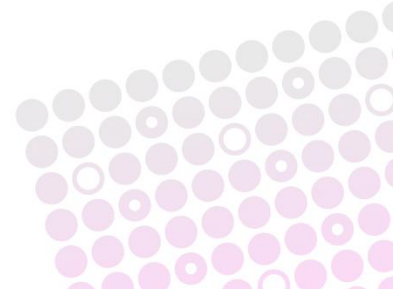
SharePoint 2010

- The **business intelligence** platform for the Enterprise and the Web



Product line up

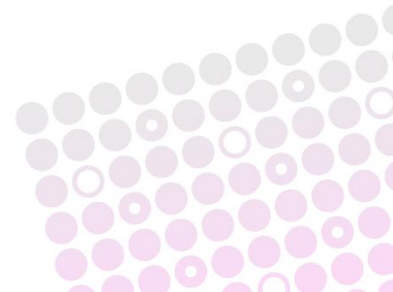
- Office
 - SharePoint Designer
 - Visio
 - Access
 - Excel
- SharePoint
 - Chart Web Part
 - Analytics
 - Performance Point Services
- SQL
 - Reporting and Analytics
 - PowerPivot



Architectural Changes in SharePoint

Impact on BI solutions

- New service model
- Secure store service
- Security model changes
- PerformancePoint becomes a SharePoint service
- Management through Powershell
- System integration via Business Connectivity Services



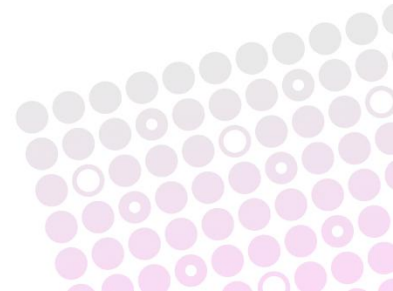
Excel and Excel Service investments

Excel

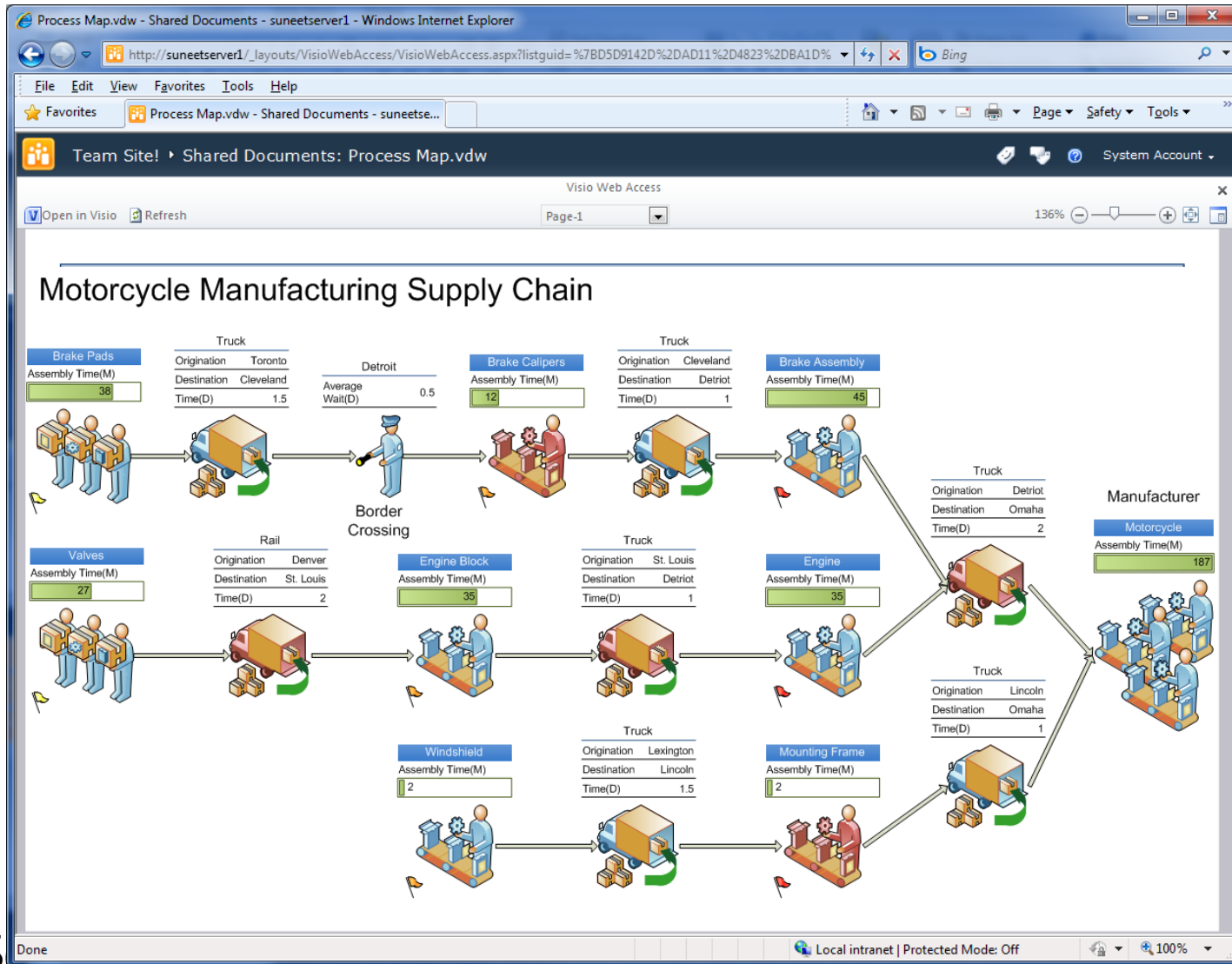
- Conditional Formatting
- Sparklines
- Slicers
- Search Filters
- Named Sets
- Pivot Charts

Excel Services

- More workbooks
- Client fidelity
- Edit
- Collaboration
- REST
- Client OM



Visio and Visio Services



Office Investments

DEMO

SharePoint BI investments

- Chart Control

Chart Customization Wizard

- [-] **Step 1: Select Chart Type**
 - Standard Chart Types
 - Custom Chart Types
- [+] Step 2: Chart Appearance Properties
- [+] Step 3: Chart Element Properties

Step 1: Select Chart Type

On the Standard Chart Types tab, you can choose a chart type from any of the available chart types, including all 2D and 3D chart types. On the Custom Chart Types tab, you can continue with the current chart type.

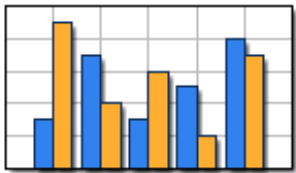
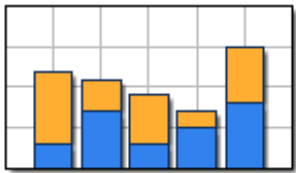
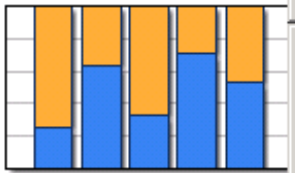
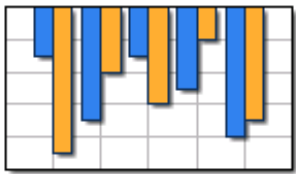
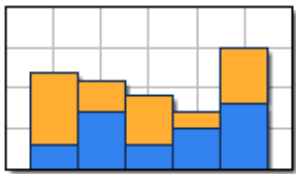
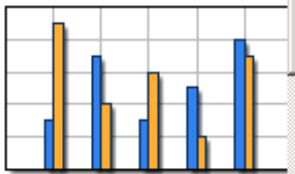

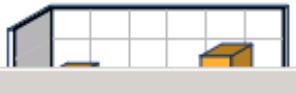

Standard Chart Types | Custom Chart Types

Chart Type Categories

- Custom
- Bar
- Area
- Line
- Point/Bubble
- Financial
- Pie
- Radar
- Polar
- Gantt/Range Column
- Range
- ErrorBar
- BoxPlot
- Funnel
- Pyramid

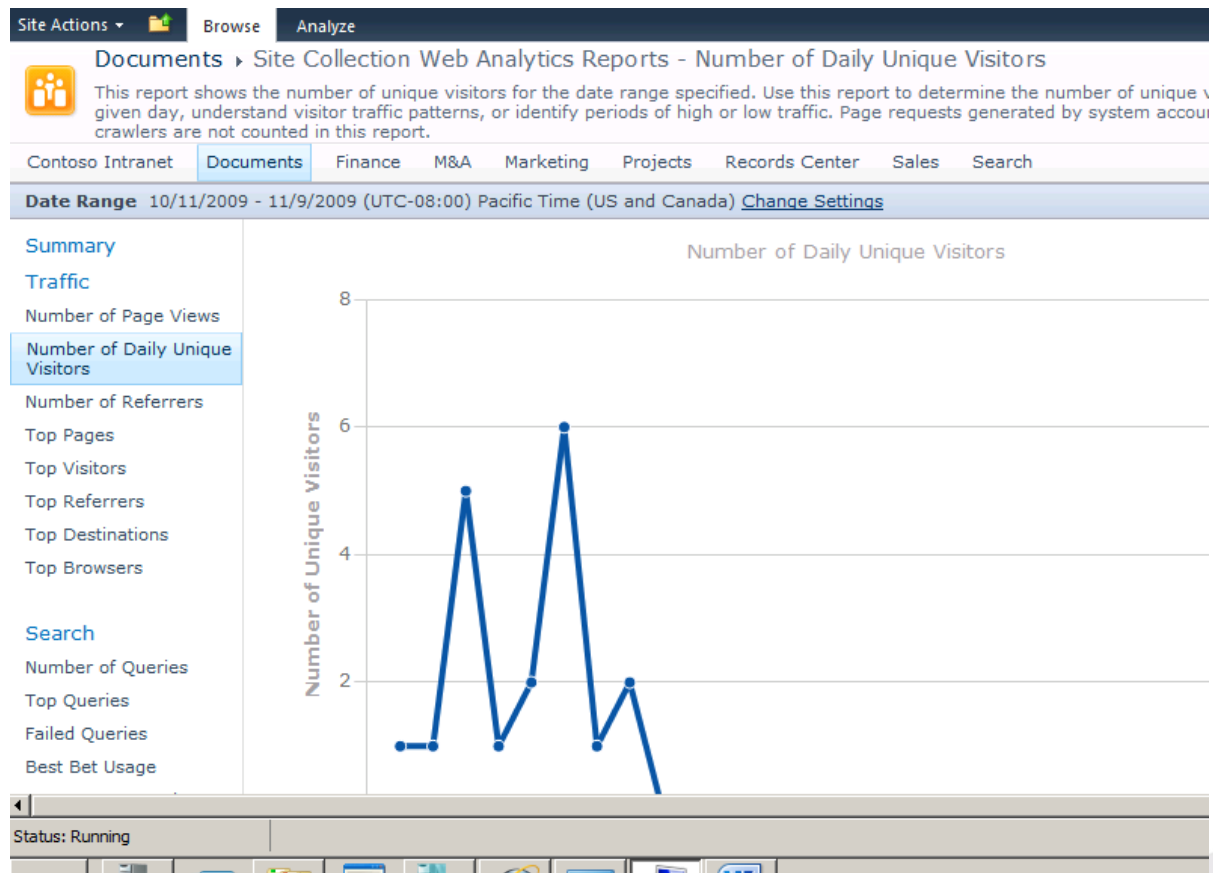
Chart Templates

All Chart Types | 2D Chart Types | 3D Chart Types

 Column	 Stacked Column	 100% Stacked Column
 Reversed Column	 No Gap Stacked Column	 Thin Column
		

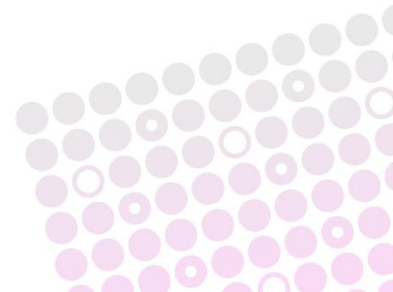
SharePoint BI investments

- Web Analytics Service

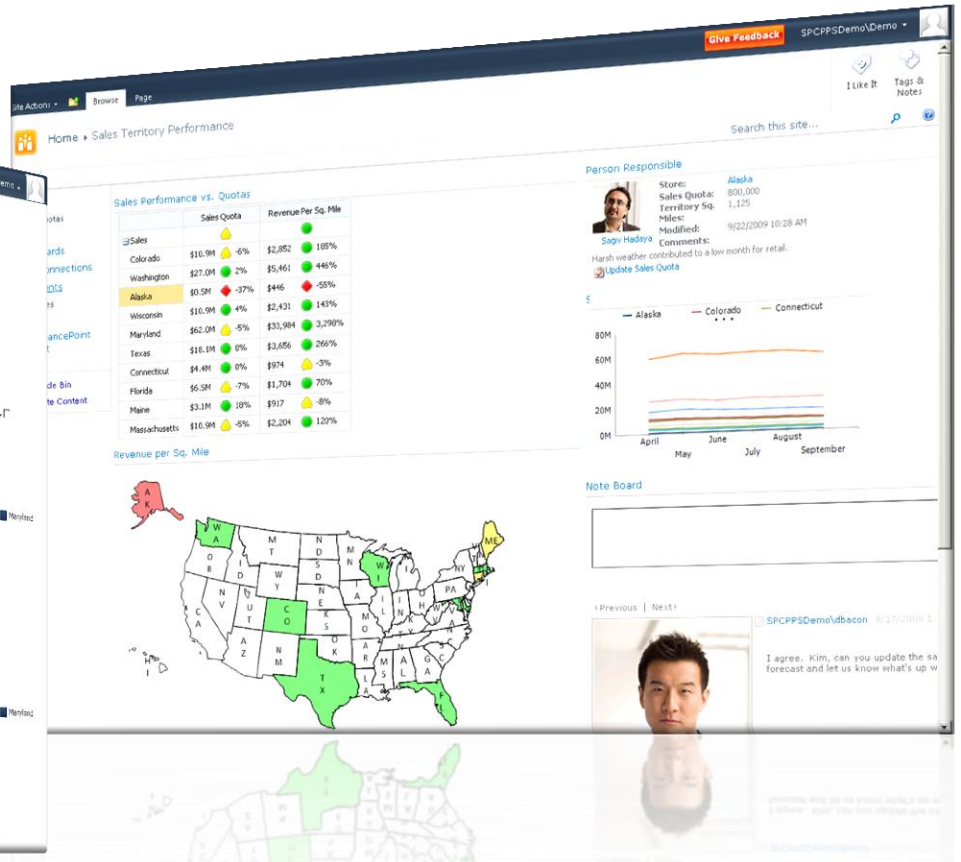


PerformancePoint in SP2010

- Extensive set of features in SharePoint to compliment BI
- Centralized content management
- Security
- Extensibility and Customization through views and templates
- Scale and performance
- Filters



PerformancePoint in SP2010

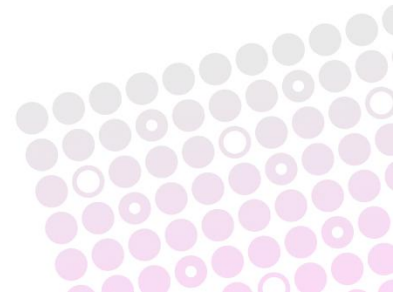


SharePoint 2010

DEMO

SQL Server RS

- One step integration configuring SSRS integration via RS add-in
- Alternative Access Mapping in server
- SharePoint user support in data extensions in server
- Performance improvements
- ULS logging



PowerPivot

PowerPivot for Excel (Client)

PowerPivot for SharePoint (Server)



PowerPivot

DEMO

Microsoft BI Stack

Microsoft | Business Intelligence

Business User Experience



- Self-service access and insight
- Data exploration and analysis
- Predictive analysis
- Rich, contextual data visualization

Business Collaboration Platform



- Thin client experiences
- Scorecards and Dashboards
- Collaboration
- Search
- Charting
- Custom reports

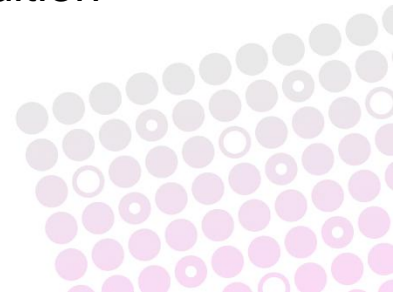
Data Infrastructure and BI Platform



- Analysis Services
- Reporting Services
- Integration Services
- Master Data Services
- Data Warehousing
- PowerPivot

SKUs / Licence implications

- **Enterprise** licences required for most of what I've shown:
 - Excel Services
 - Visio Services
 - Access Services
 - Custom Reports
 - Advanced Charting
 - PerformancePoint Services
- Intranet scenario
 - Enterprise Server
 - eCALs
- Internet scenario
 - Microsoft SharePoint Server for Internet Sites Enterprise Edition
- PowerPivot will be **separately** licenced



Thank you for your time

- Questions?
- Contact me:
 - ben@cscope.com
 - @benrobb
 - <http://sharepointtales.wordpress.com>

